



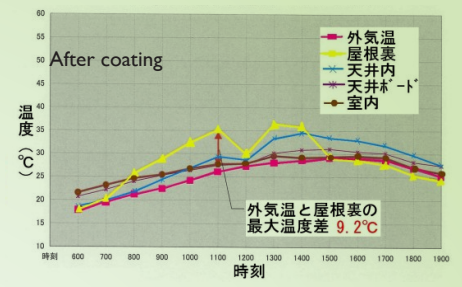
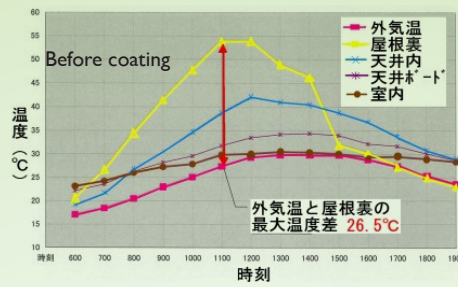
Construction case studie

# Comparison between the covering method and the heat shield coating



# Buildings Adgreencoat construction case I

## Toppand Products (satle factory)



11:00 AM	Outside temp.	Back of roof	Ceiling	Railing board	Inside the building
Before coating 5 / 12	27.3°C	53.8°C	38.8°C	31.7°C	29.8°C
After coating 6 / 6	26°C	35.2°C	29.4°C	27.4°C	27.7°C
Temp difference		18.6°C	9.4°C	4.3°C	2.1°C

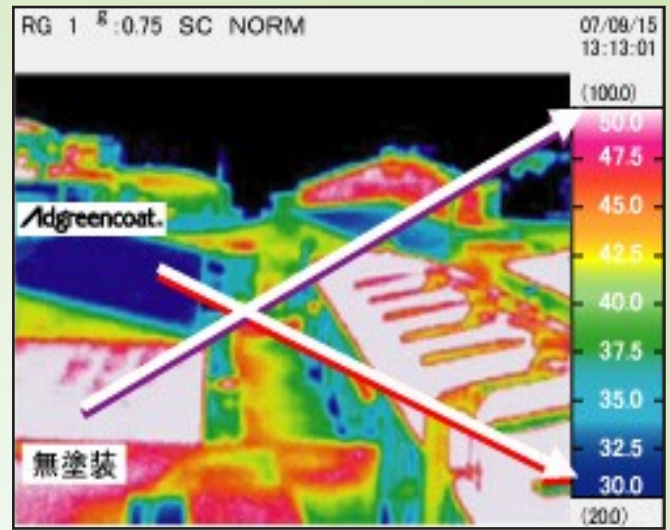


## Dai Nippong Insatsu (Koma noha Campus)



## > Factories case 2

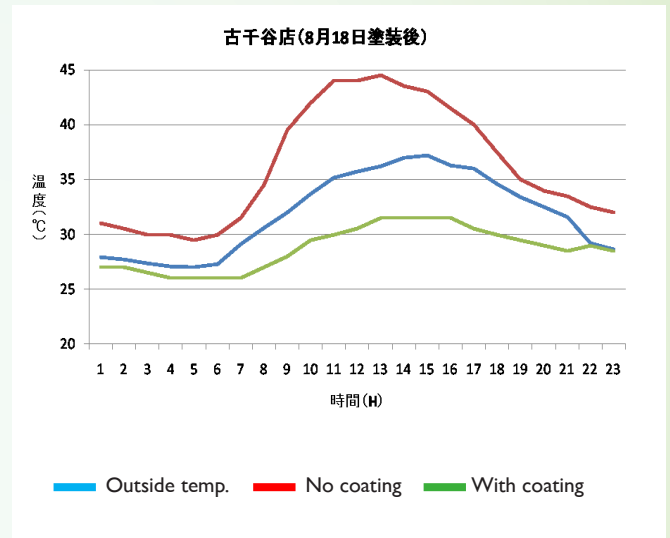
### Towa Industry



More than 20°C can be seen when compared with no coating.  
Comfortable work place. Low cost for airco.

Adgreencoat®	29°C
No coating	67°C

### Supermarket ( Saitama pref. )



Average temp. 12:00 ~ 15:00 - 36.5°C		
No coating	43.7	+7.2°C
With coating	31.2	-5.3°C



Temp difference	-12.5°C
Power saving effect	23%

